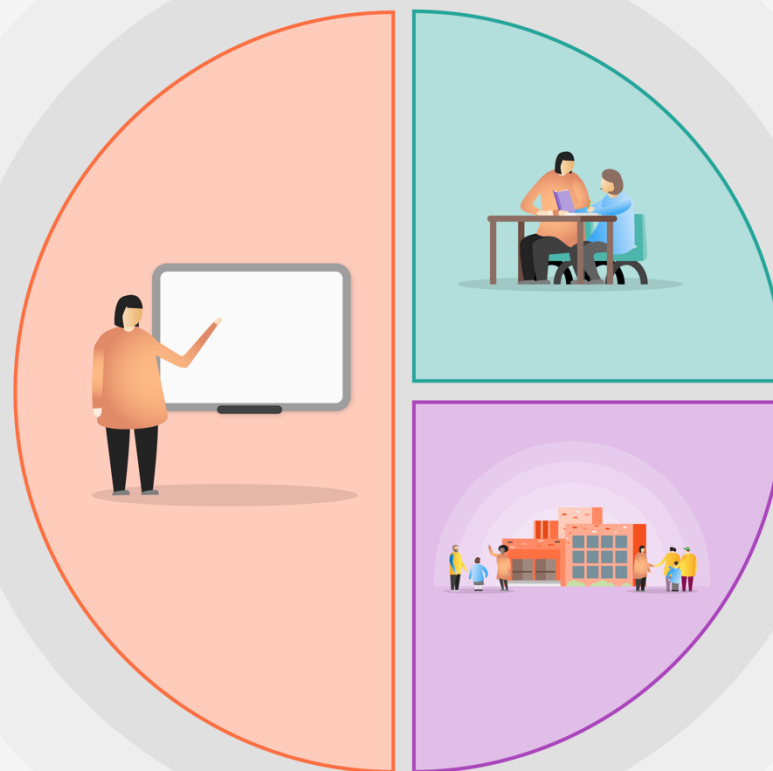


1 Teaching

- Feedback: dedicated time to focus on learning needs in reading and writing with class teachers
- Phonics - QFT new scheme
- Reading comprehension strategies
- Mastery learning
- Oral language interventions
- CPD on neurodiversity
- CPD on behaviour strategies
- CPD on Thrive



2 Targeted academic support

- Phonics interventions
- English TP interventions
- Parent workshops – reading and writing
- Weekly Reading experience for lowest 20%
- Oral language interventions
- Reading comprehension interventions

3 Wider strategies

- Parental engagement: academic and SEMH workshops/courses
- Thrive
- Behaviour policy
- Arts and aspiration participation (weekly timetabled enrichment opportunities and termly trips)
- Trips and uniform subsidy
- Musical instrument tuition